



Wood



CREATE BEYOND CONVENTION

MEIJIFOCUS

Installation and User Manual

Tested by OMNI-Test Laboratories, Inc. and approved in accordance with:

UL 737-2011 and ULC S627-23

US EPA EXEMPT

Report number : 0304WF014S

This document was provided with your Focus fireplace.

PLEASE READ AND RETAIN THIS MANUAL



CONTENTS

INTRODUCTION	04
SPECIFICATIONS	05
■ DETAILED PLAN	05
■ ROOF OUTLET REQUIREMENTS	06
■ CHIMNEY REQUIREMENTS	06
■ SUPPORTING STRUCTURE RULES	06
■ CONNECTORS	07
■ FRESH AIR INLET DEVICE	07
■ FLOOR CLEARANCE REQUIREMENTS	08
■ WALL CLEARANCE REQUIREMENTS	09
■ MATERIALS, PARTS, AND TOOLS INCLUDED FOR INSTALLATION	10
INSTALLATION	11
■ ASSEMBLY OF THE ADJUSTABLE SUSPENSION PLATE	11
■ FIREPLACE INSTALLATION (WITH MEIJI STEEL BASE OPTION)	12
USE	16
■ HANDLING FLAMMABLE PRODUCTS	16
■ FIRE BOWL	16
■ ASHES	16
■ FUEL	16
■ BEFORE YOUR FIRST FIRE	17
■ LIGHTING AND MAINTAINING YOUR FIRE	17
■ PROTECTIVE GLOVES	18
■ OPERATING AND USING THE DAMPER	18
MAINTENANCE	19
■ ASH REMOVAL	19
■ CREOSOTE FORMATION	19
■ CHIMNEY SWEEPING	19
■ FIRE GLASSES CLEANING	19
■ SURFACE CLEANING	20
■ SPARE PARTS	20
WARRANTY	20
APPENDIX	21
■ ADJUSTABLE SUSPENSION PLATE	21
■ GAS ADAPTATION	23

INTRODUCTION

Please read this entire manual before proceeding with installation and use. Failure to follow the instructions in this manual may result in serious property damage and bodily injury, including fatal injury. Be sure to contact local authorities for additional information on regulations in your area. Failure to comply with this manual will automatically void the Focus warranty.

Consult with competent authorities (e.g., municipal building services, fire departments, fire prevention offices) before installation to determine if a permit is required.

NOTE :

This fireplace has been certified for use with wood or with a gas burner compliant with ANSI Z21.60 standard, with a heat output of 65,000 BTU/Hr or less.

All **WARNINGS** and **SAFETY RULES** will appear in highlighted boxes.

Keep this manual in an accessible location for future reference.

Thank you for choosing a Focus fireplace.

Manufactured by:
atelier dominique imbert s.a.s.
34380 Vels le fort-France
www.focus-creation.com

tested to USA: UL737-2011
CANADA: ULC S627-23

**CAUTION: HOT WHILE IN OPERATION
DO NOT TOUCH. KEEP CHILDREN AND
CLOTHING AWAY. CONTACT MAY
CAUSE SKIN BURNS. SEE NAMEPLATE AND
INSTRUCTIONS. KEEP FURNISHINGS AND OTHER
COMBUSTIBLE MATERIALS A CONSIDERABLE
DISTANCE AWAY FROM THIS APPLIANCE.**

Report Number : 0304WFF015

LISTED SOLID FUEL FIREPLACE STOVE / MODEL: MEJIFOCUS

SERIAL NO.

DATE OF MANUFACTURE:

01	02	03	04	05	06	07	08	09	10	11	12	2005	2006	2007	2008	2009
■	■	■	■	■	■	■	■	■	■	■	■	■	■	■	■	■

CLEARANCE TO COMBUSTIBLE STRUCTURES

A: GLASS TO SURROUNDING WALLS : 26"
B: CHIMNEY CONNECTOR TO SURROUNDING WALLS : 41"
UNIT TO FLOOR (top of stationary plate) : 16"
MINIMUM FLOOR TO CEILING HEIGHT : 9'

glass
eventual built base

FLOOR PROTECTION

Floor protection must be made of non-combustible material or equivalent (R value of 0.6 or greater) extending beneath heater and to front / sides / rear as indicated on the diagram.
In the USA: 16" from glass
In Canada 18" from glass
WARNING : The area under the pedestal must be kept free of obstructions or combustible material.

16" (USA)
18" (Canada)

glass
eventual built base

Note: the floor protection diameter must be: Ø 70" (USA) and Ø 74" (Canada)

PREVENT HOUSE FIRES:

Install and use only in accordance with manufacturer's installation and operation instructions and local codes. In absence of any local codes, installation must meet minimum requirements of NFPA 221 in USA, in Canada CSA B365. Refer to manufacturer's instructions and local codes for precautions required for passing chimney system through a combustible wall or ceiling. Inspect and clean chimney system frequently in accordance with manufacturer's instructions. Do not connect this unit to a chimney serving another appliance. **WARNING :** For use with solid wood fuel only. Do not use any other types of fuels. **OPERATE ONLY WITH GLASS DOORS CLOSED.** In case of broken glass panels, replace only with ceramic glass. Must use flue connector, anchor plate and connection pieces provided by Focus for installation. refer to owner manual for installation instructions. Chimney must be factory built UL 103HT or masonry. Inspect and clean chimney frequently. Under certain conditions of use, creosote build-up may occur rapidly. Contact local building or fire officials about restrictions and installation inspection in your area. **DO NOT OVERFIRE - IF UNIT OR CHIMNEY CONNECTOR GLOWS, YOU ARE OVERFIRING.**

Exempt from EPA Certification under 40CFR60.531

SPECIFICATIONS

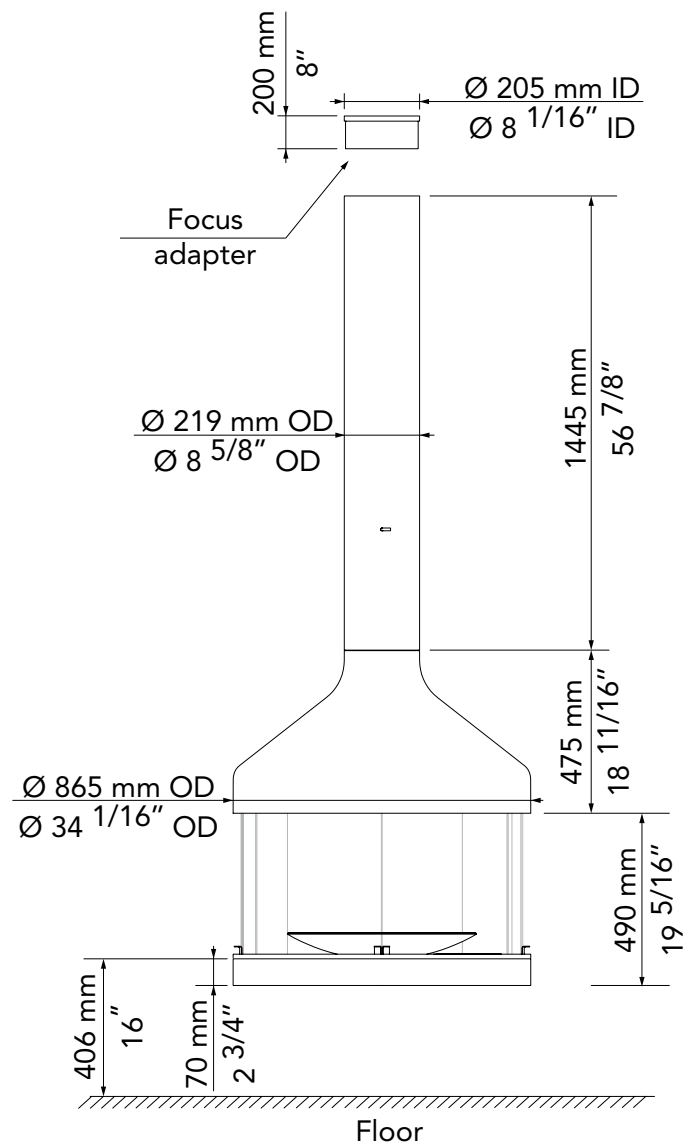
⚠ WARNING :

DO NOT INSTALL IN ANY FIREPLACE. DO NOT INSTALL OUTDOORS.

DO NOT CONNECT OR USE IN CONJUNCTION WITH AIR DISTRIBUTION DUCTS UNLESS THEY ARE SPECIFICALLY APPROVED FOR THIS INSTALLATION.

DO NOT INSTALL IN A TRANSPORTABLE BUILDING.

■ DETAILED PLAN



Hood weight : 64 kg (141.1 lbs)

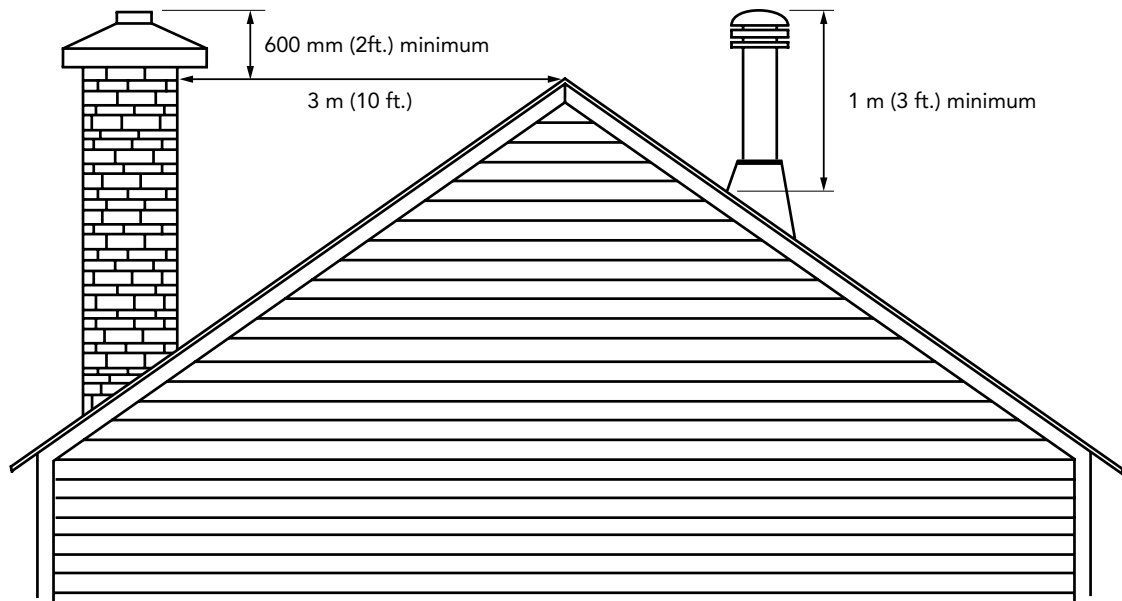
Base plate weight: 44 kg (97 lbs)

Steel flue weight : 16 kg/meter (10,6 lbs/foot)

Suspension plate weight : 66 kg (145 lbs)

SPECIFICATIONS

■ ROOF OUTLET REQUIREMENTS



■ CHIMNEY REQUIREMENTS



WARNING :

DO NOT CONNECT THIS UNIT TO A CHIMNEY FLUE SERVING ANOTHER APPLIANCE.

The total length from the floor to the chimney cap must be at least 5400 mm (18').

If the fireplace is installed less than 5 km (3 miles) from the ocean or with a 30° elbow or more, the total length must be at least 6400 mm (21').

The appliance must be connected to a flue that meets the specifications for HT-type chimneys, as described in the UL 103 / ULC S629 standard.

■ SUPPORTING STRUCTURE RULES



WARNING :

THE SUSPENSION PLATE SUPPORT (ROOF STRUCTURE, SLAB, ETC.) MUST BE SIZED TO ACCOMMODATE BOTH THE STATIC AND DYNAMIC LOADS OF THE FIREPLACE. IT IS YOUR RESPONSIBILITY TO CONSULT AN ENGINEER OR ARCHITECT TO PERFORM THESE CALCULATIONS.

SPECIFICATIONS

■ CONNECTORS

All connectors, including the Focus steel flue, the Focus universal adapter (200 mm / 8"), and the finishing collar provided by the chimney manufacturer with a single-wall connection, are categorized as non-insulated chimney components.

To avoid thermal traps, it is essential that the chimney connector does not pass through an attic, roof space, closet, or any concealed area that could act as a heat trap, including floors or ceilings.

In cases where passing through an attic, roof framing, floor, or ceiling is unavoidable, it must be done using an insulated chimney.

Furthermore, strict adherence to the "safety distances from combustible materials" outlined on page 8 is essential.

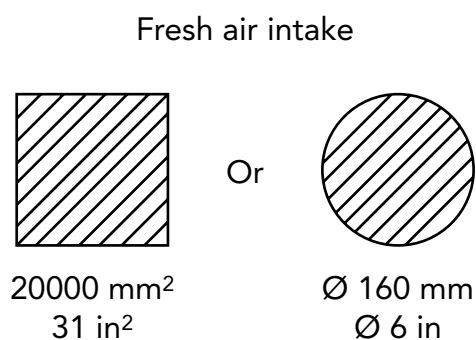


WARNING :

PASSING THROUGH A WALL OR COMBUSTIBLE CONSTRUCTION IS NOT SUITABLE FOR THIS FIREPLACE.

■ FRESH AIR INLET DEVICE

For optimal performance, Focus recommends installing a fresh air intake in the room, ideally positioned beneath the fireplace. We suggest using the **Deflect-O A0684 semi-rigid aluminum duct**. The minimum size for the fresh air inlet is:



WARNING :

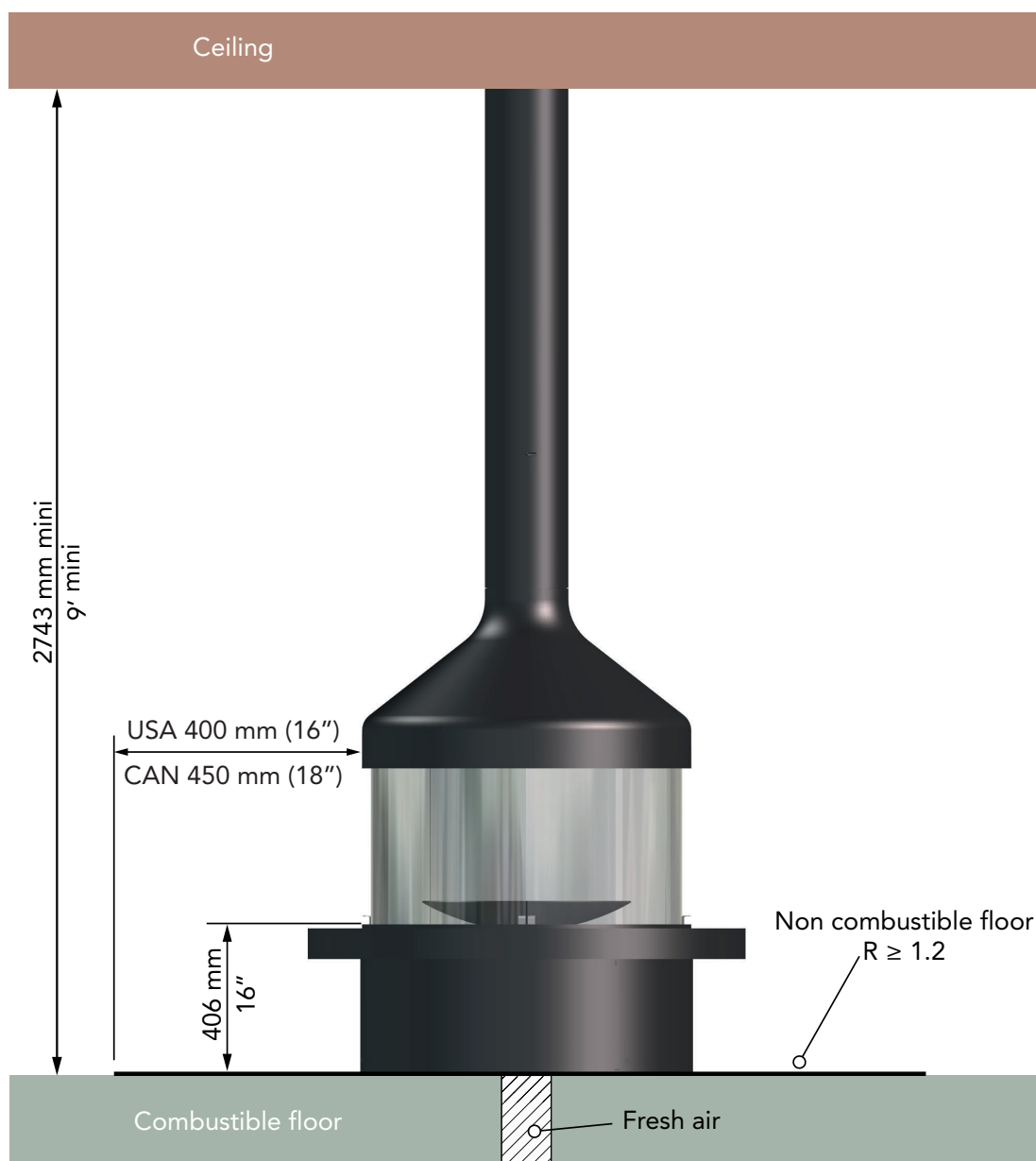
THIS FRESH AIR INLET DEVICE IS MANDATORY WHEN USING MECHANICAL VENTILATION SYSTEMS SUCH AS KITCHEN HOODS, PERMANENT AIR EXTRACTORS, OR ANY OTHER AIR CONDITIONING SYSTEM THAT CREATES A VACUUM IN THE HOME.

SPECIFICATIONS

■ FLOOR CLEARANCE REQUIREMENTS

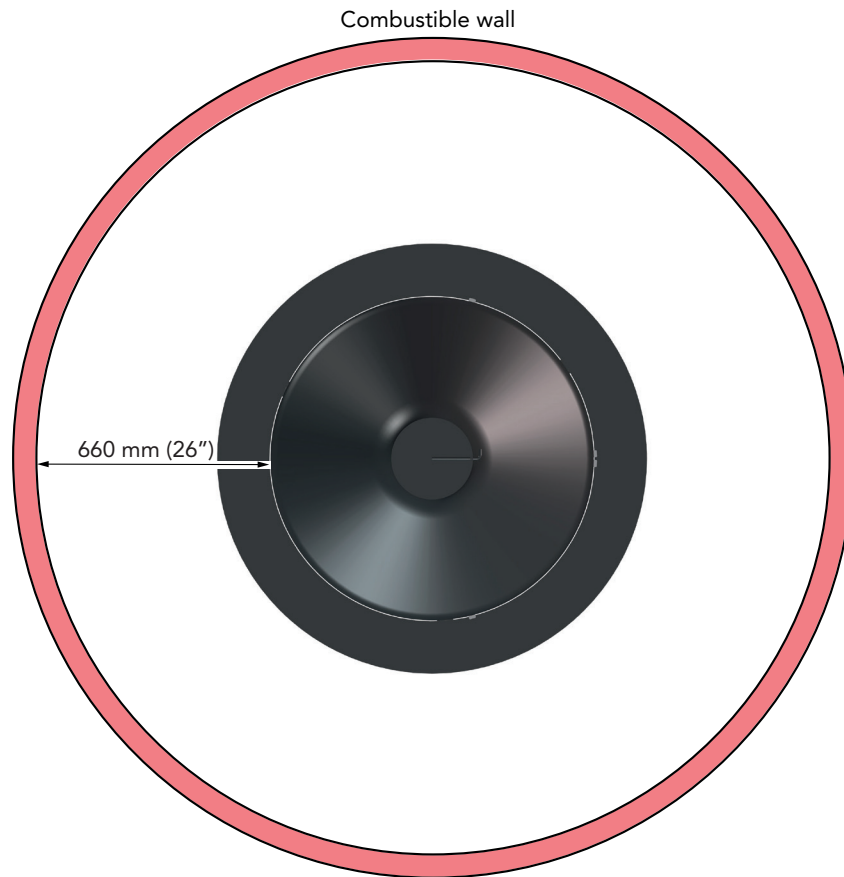
⚠ WARNING :

THE PRESENCE OF THE THERMAL SHIELD UNDER THE FIREPLACE BASE IS MANDATORY. A MINIMUM DISTANCE OF 406 MM (16") FROM THE FIREPLACE BASE TO THE FLOOR MUST BE STRICTLY MAINTAINED.



SPECIFICATIONS

■ WALL CLEARANCE REQUIREMENTS



NOTE :

The clearance from the Focus steel flue is 1040 mm (41").

- When the fireplace is placed near a non-combustible wall, maintain a minimum clearance of 100 mm (4") for adequate ventilation. To prevent premature aging of painted walls, only use mineral or acrylic paints.
- The fire clearance to glass (from the edge of the fireplace) is 800 mm (31 1/2").
- The fire clearance to a PVC window: refer to the technical specifications of the window.

⚠ WARNING :

FIRE CLEARANCES MAY ONLY BE REDUCED WITH THE APPROVAL OF THE RELEVANT AUTHORITIES.

SPECIFICATIONS

■ MATERIALS, PARTS, AND TOOLS INCLUDED FOR INSTALLATION

Supplied with Delivery :

- The hood.
- The base plate.
- Steel flue.
- Adjustable suspension plate or fixed suspension plate.
- 4 insulating washers (heat-loss prevention).
- The fire bowl.
- Focus kit (thermal protective glove, assembly gloves, touch-up spray paint, the cold handle and this manual)
- 5 fire glasses (3 stationary and 2 sliding).

Optional :

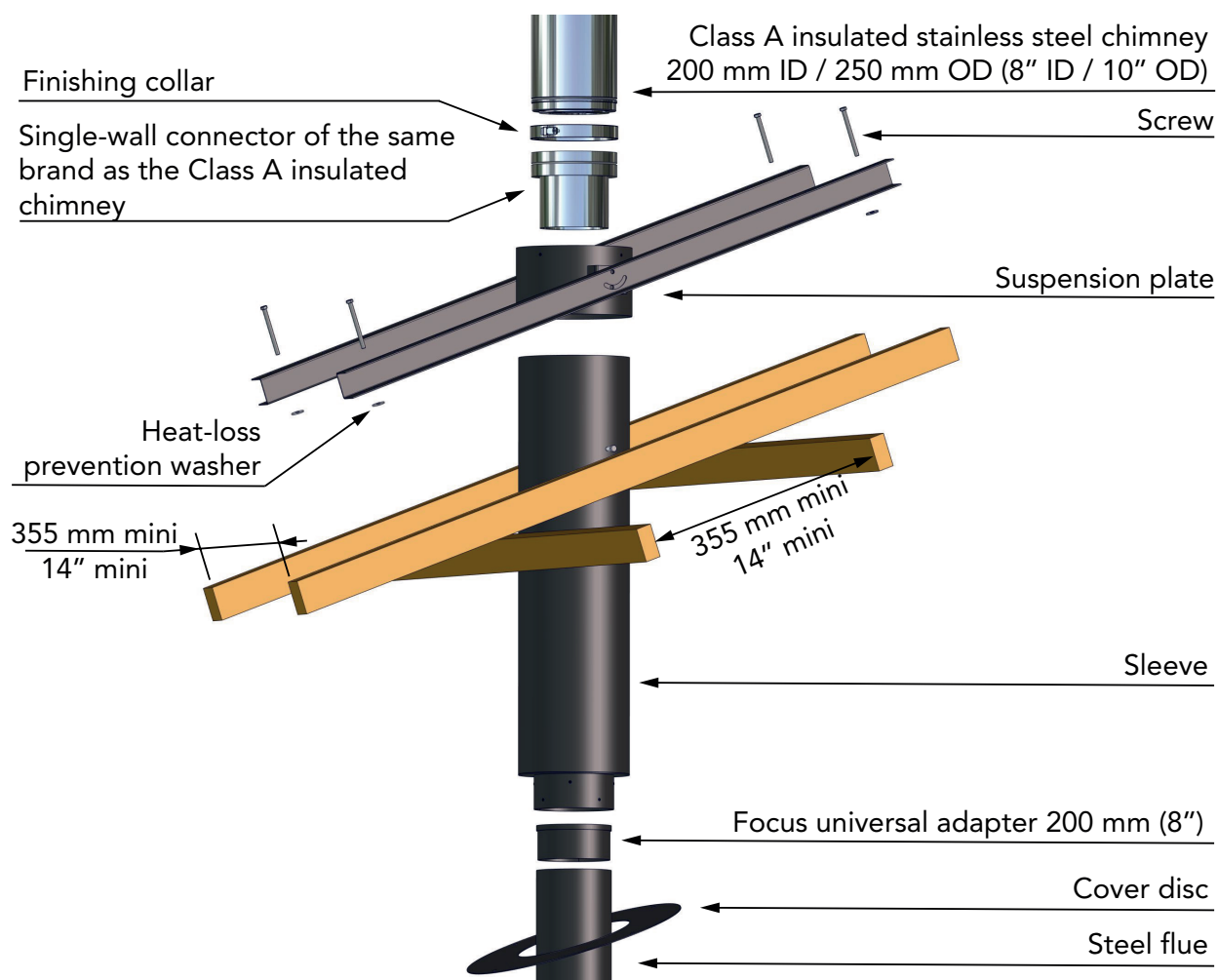
- Cover disc.
- Steel flue extension.
- Steel base.

Minimum Tools Required for Installation :

- Drill.
- Allen keys (M4).
- Screwdriver set.
- Open-end wrench (M12).
- Scaffolding (depending on ceiling height).
- A minimum of two people is required.

INSTALLATION

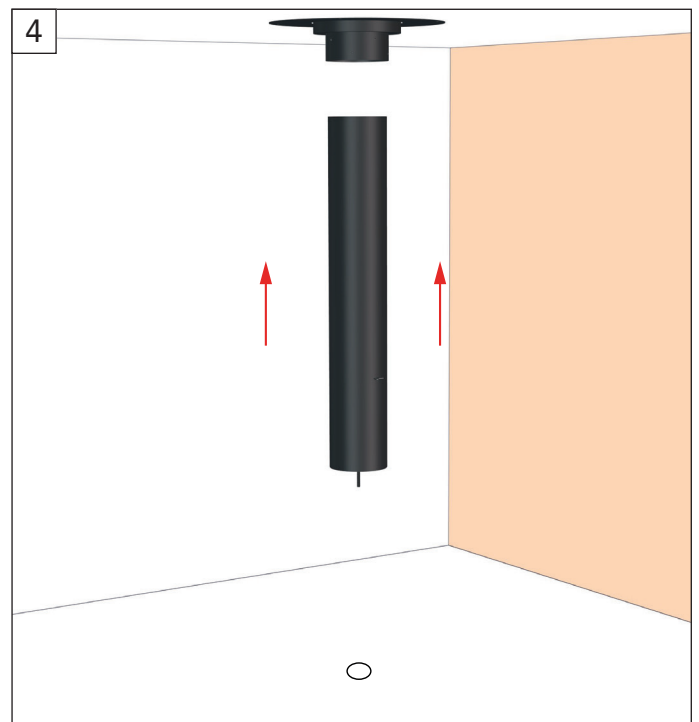
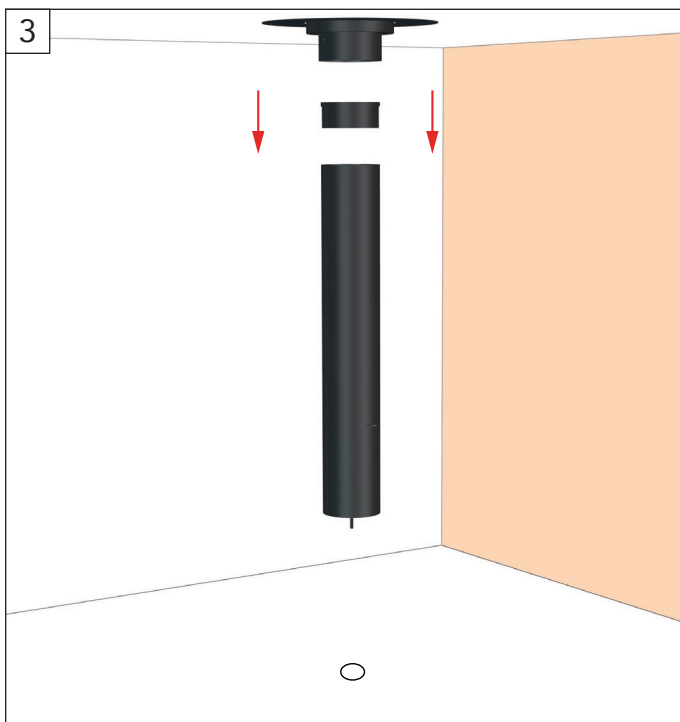
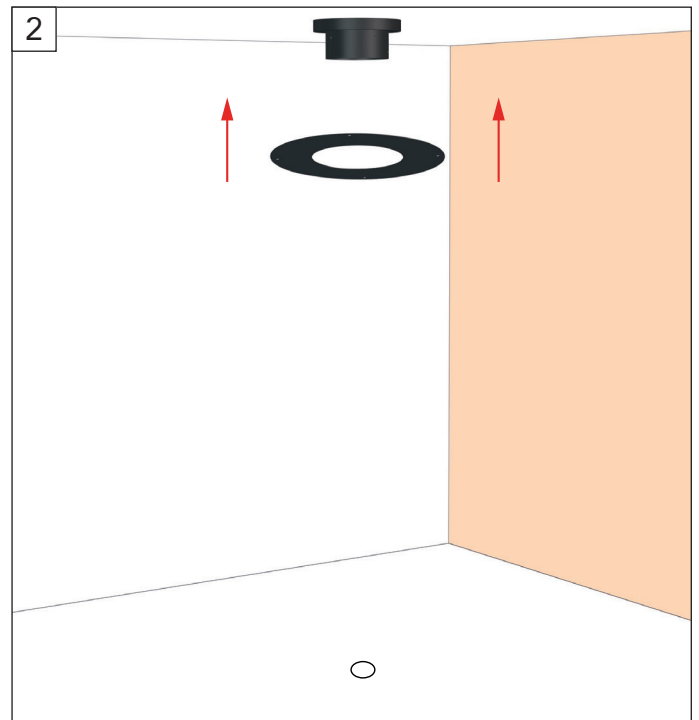
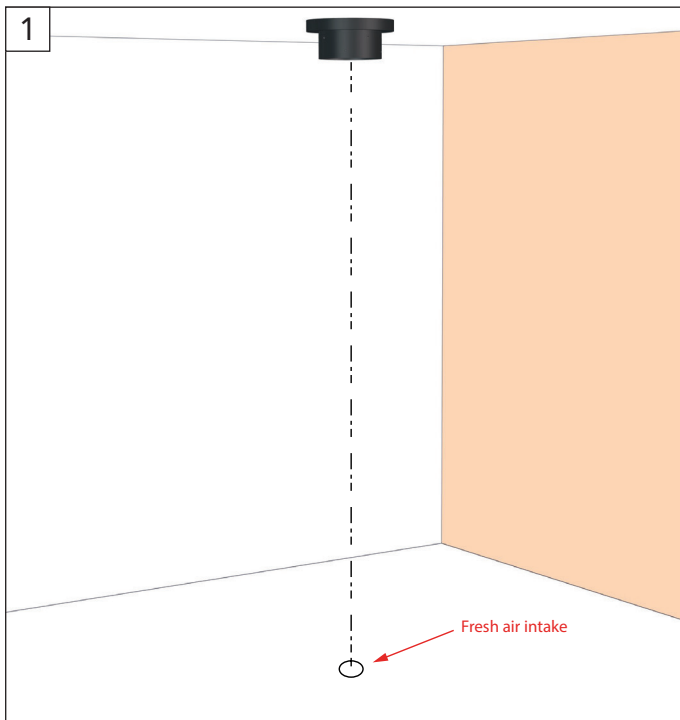
■ ASSEMBLY OF THE ADJUSTABLE SUSPENSION PLATE



Note : For more information, please refer to the appendix "Adjustable Suspension Plate".

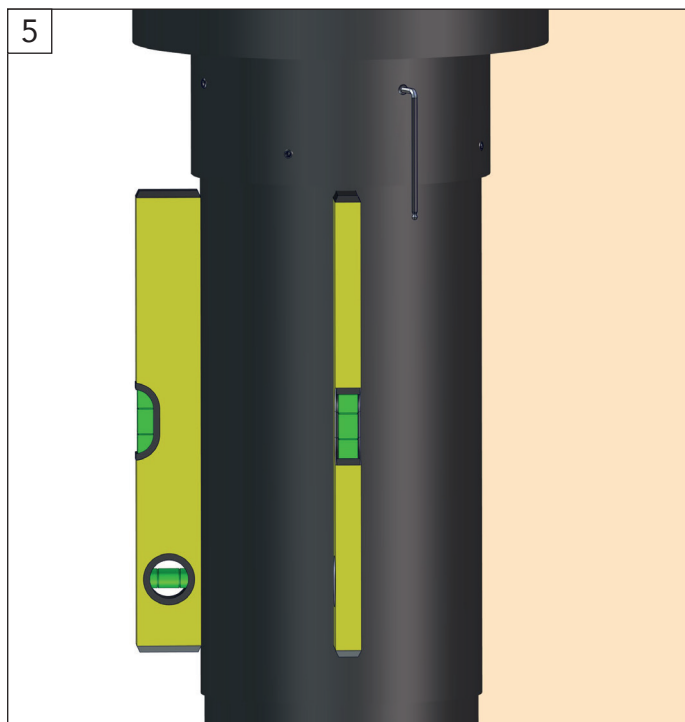
INSTALLATION

■ FIREPLACE INSTALLATION (WITH MEIJI STEEL BASE OPTION)



Put the 200 mm (8") Focus adapter to the end of the flue.

INSTALLATION

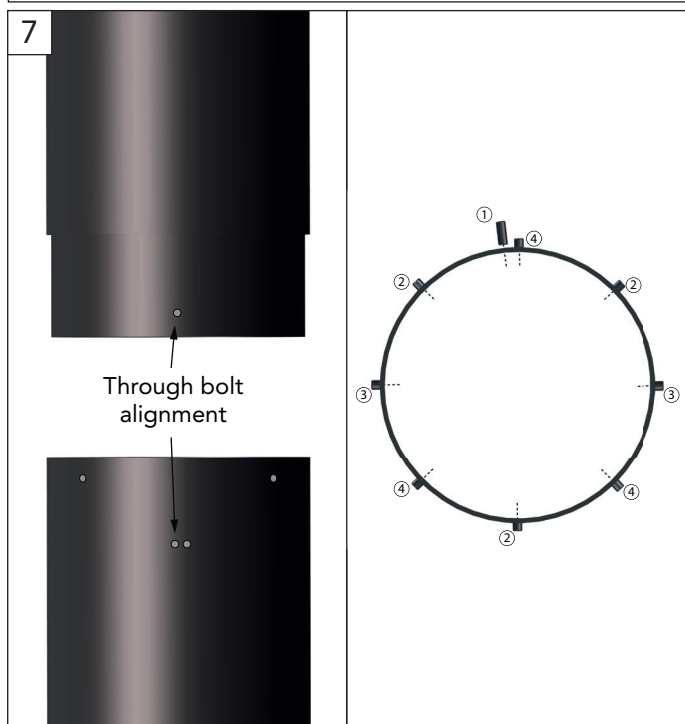


Level the flue.

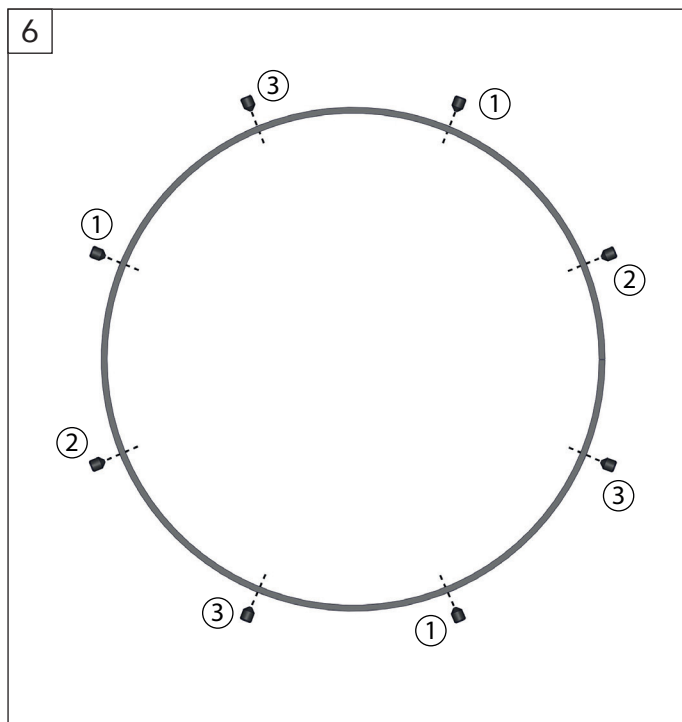


WARNING :

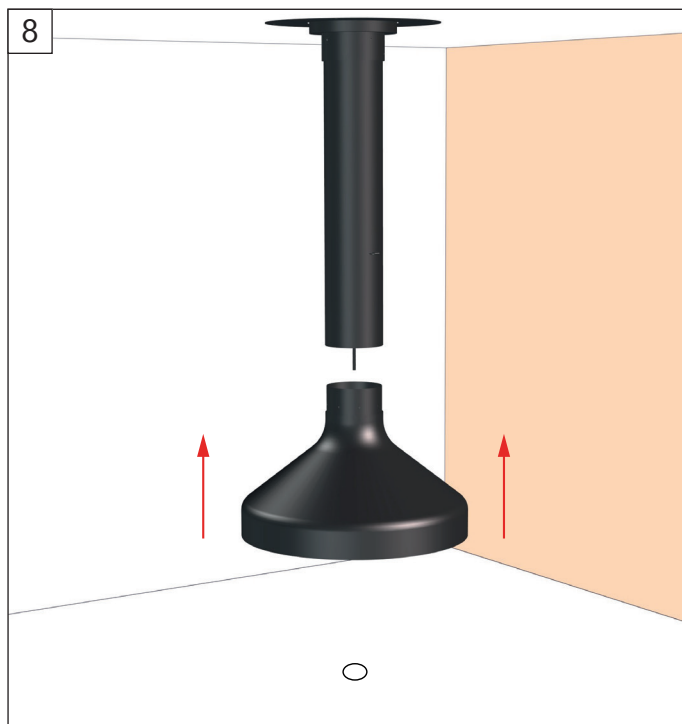
THE SCREWS ARE NOT FLUSH.



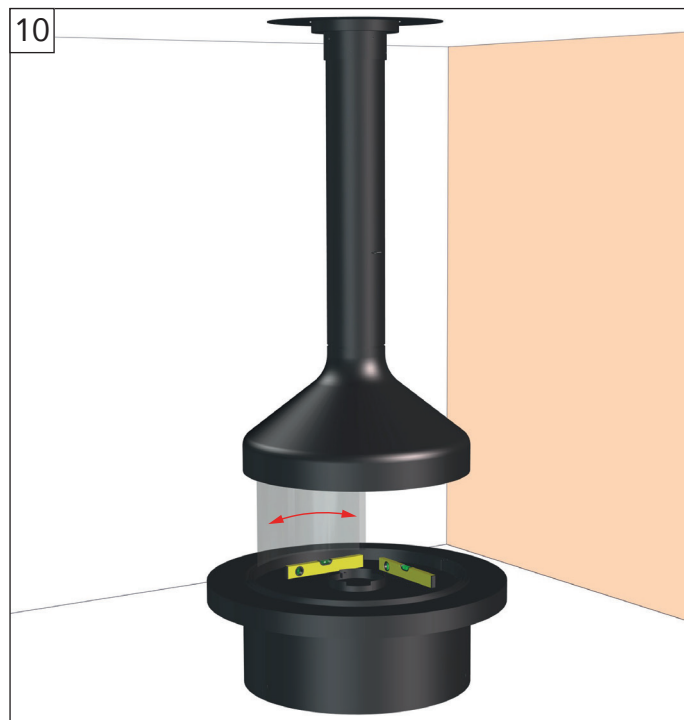
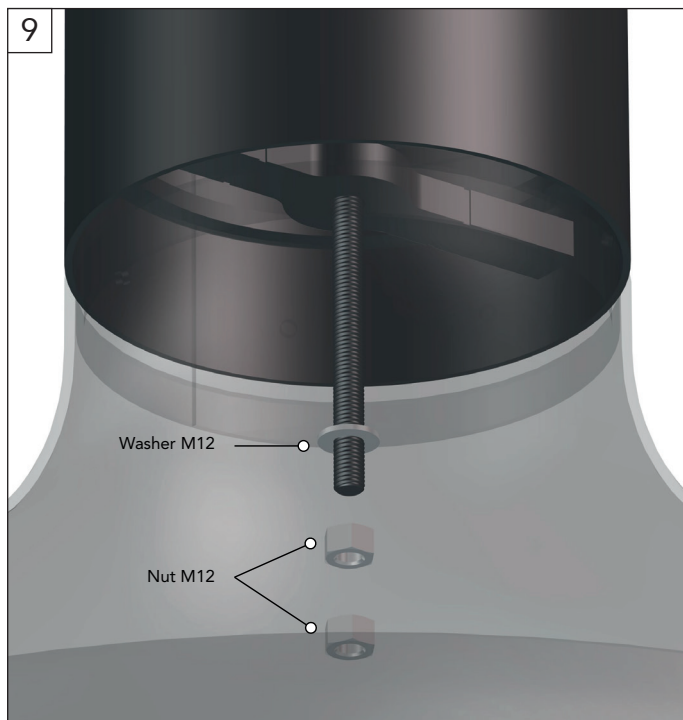
If you have multiple flue sections, connect them to the first section using flat screws and the through-bolt, following the tightening sequence provided.



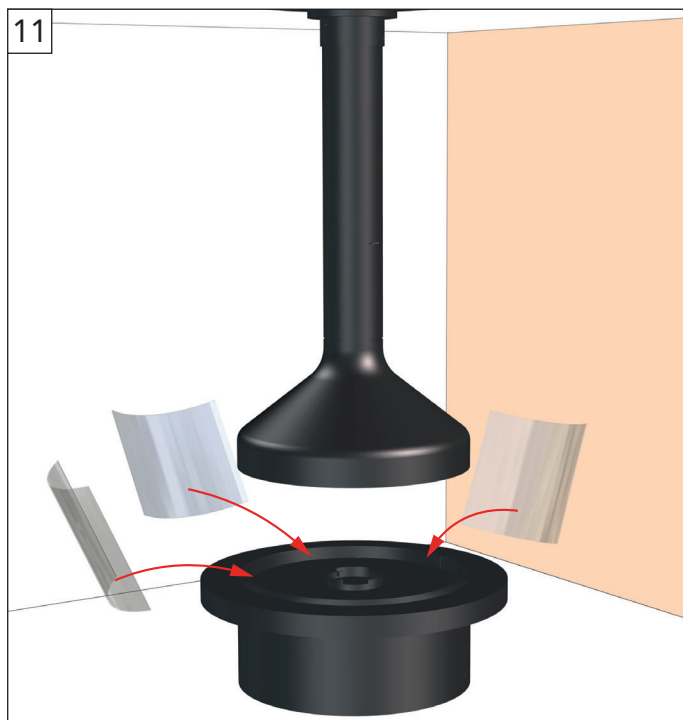
Tighten the pointed screws on the suspension plate.



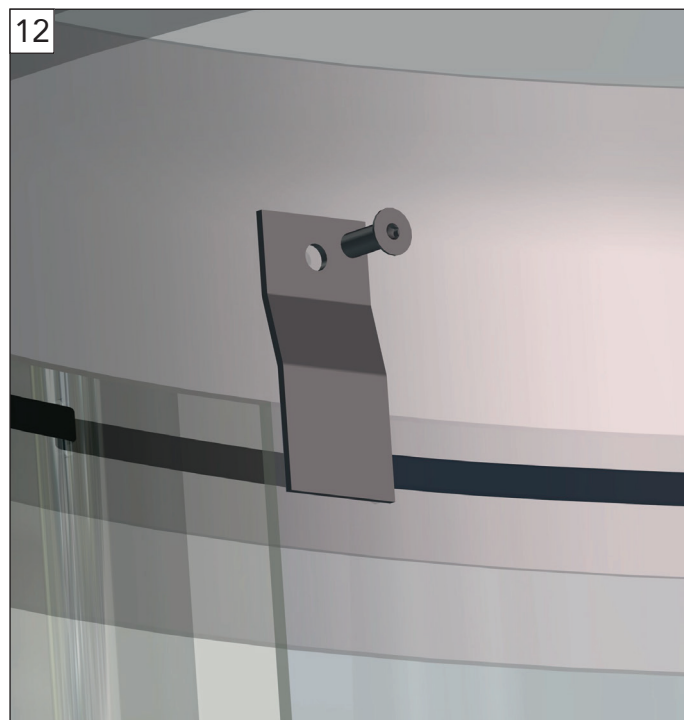
INSTALLATION



Position the fire bowl under the hood, check the level, and place a glass while rotating it 360° to confirm proper centering.

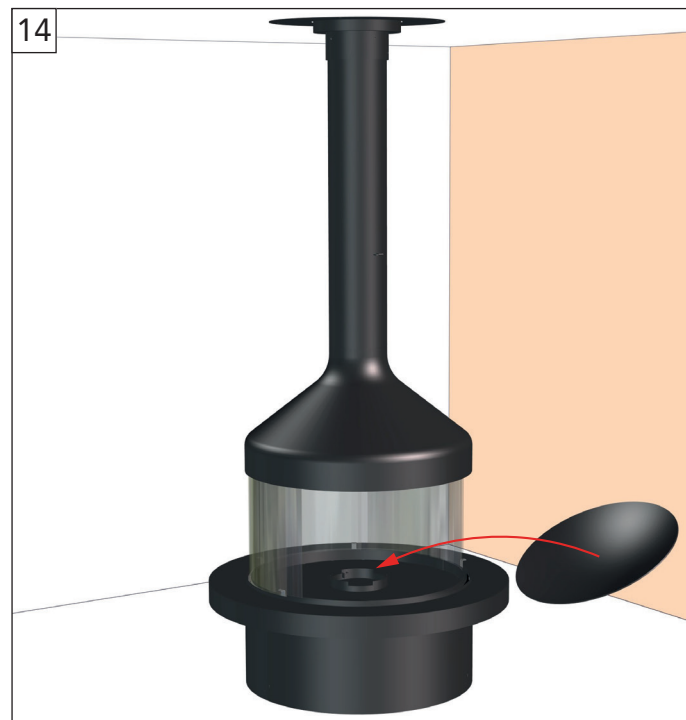
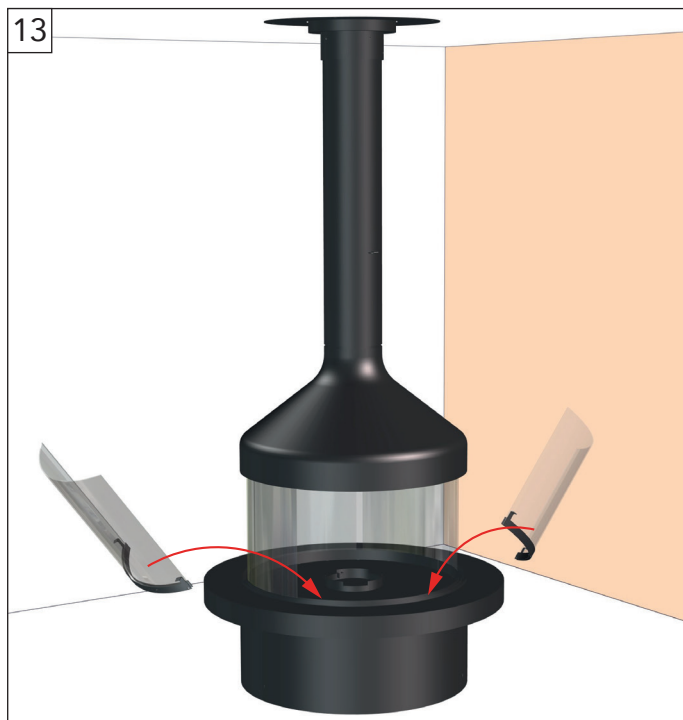


Place the 3 stationary glass panels on the inner rail.



Use the designated tabs to secure the glass.

INSTALLATION



Place the two sliding glass panels on the outer rail.

USE

⚠ WARNING :

DURING OPERATION, THE FIREPLACE EMITS HEAT. SURFACES CAN BECOME VERY HOT. KEEP CHILDREN, VULNERABLE INDIVIDUALS, CURTAINS, PETS, AND OTHER ITEMS AT A SAFE DISTANCE. ANY CONTACT MAY RESULT IN SEVERE BURNS.

■ HANDLING FLAMMABLE PRODUCTS

⚠ WARNING :

DO NOT USE CHEMICALS OR LIQUIDS TO LIGHT YOUR FIRE.

Do not use fuels such as lamp oil, various types of gasoline, kerosene, lighter fluid, or any other liquids to light or rekindle the fire. Ensure that these liquids are kept away from the fireplace.

■ FIRE BOWL

The fire bowl are located inside the fireplace and should only be removed during cleaning, once the ashes have completely cooled down. The fire is built on the fire bowl.

⚠ WARNING :

ONLY ROTATE THE FIRE BOWL WHEN THE FIREPLACE IS OFF AND COLD.



■ ASHES

Ashes must be placed in a metal container with a tight-fitting lid. The closed container should be placed on a non-combustible surface, away from any flammable materials, until disposal. If the ashes are to be buried or dispersed, they must remain in the closed container until they are completely cooled.

■ FUEL

⚠ WARNING :

DO NOT BURN TRASH OR FLAMMABLE LIQUIDS SUCH AS GASOLINE, NAPHTHA, OR MOTOR OIL. DO NOT STORE FIREWOOD IN THE FIRE CLEARANCE ZONE AROUND THE FIREPLACE.

Burn only natural, dry, log wood. The wood's moisture content should not exceed 20%. We recommend using dry wood that has been stored for 2 years. Use a covered shelter to store your wood.

USE

■ BEFORE YOUR FIRST FIRE

WARNING :

THE MEIJIFOCUS HAS BEEN TESTED FOR USE WITH GLAZED PANELS FULLY CLOSED. IF DOOR IS OPEN OR LEFT PARTLY OPEN, GAS AND FLAME MAY BE DRAWN OUT OF THE FIREPLACE OPENING, CREATING RISKS FROM BOTH FIRE AND SMOKE. TO REDUCE THE RISK OF FIRE INJURY, DO NOT REMOVE GLAZED PANELS!

- Clean any dust accumulated during transport or installation using a damp sponge and/or a dry cloth.
- If you notice scratches on painted models, use only the Focus touch-up spray paint provided. If using the spray paint, ventilate the room before lighting your fire to disperse any fumes generated during the paint curing process.
- The first fire should be light. Do not use packing materials or pallet wood as fuel.
- The paint we use is thermoplastic, baked at 250°C (482°F) for 30 minutes. Due to the gradual curing of the components, the fireplace may emit slight smoke during the first fires. Painted surfaces near the fire may temporarily become slightly sticky or tacky when hot.

In such cases, we recommend:

- Not to worry about any residual smoke or odors. This is normal during the first few fires and will quickly subside.
- Avoid touching, rubbing, or attempting to clean the fireplace while it is still hot. To prevent thermal shock, we strongly advise against pouring water on a vigorous fire to extinguish it.

■ LIGHTING AND MAINTAINING YOUR FIRE

WARNING :

**DO NOT OVERLOAD YOUR FOCUS FIREPLACE TO PREVENT OVERHEATING.
DO NOT USE YOUR FIREPLACE IF A GLASS PANEL IS DAMAGED OR BROKEN.
DO NOT LIGHT YOUR FIRE WITHOUT THE FIRE BOWL.**

To light the fire, we recommend using a small amount of fire starter along with sufficient kindling (small logs, branches, etc.) to create an initial light fire.

Ensure the damper is fully open. Once the light fire is burning steadily, add larger logs (between 3 and 7 depending on their size), ensuring not to smother the fire.

Leave some gaps between the logs to allow airflow. Adjust the position of the damper to avoid smoke back-flow.

To maintain or sustain your fire, add logs as necessary (refer to the **NOTE** below).

NOTE : 3 kg of wood split into 10 small logs will burn more intensely (and faster) than 3 kg of wood split into 3 larger logs. However, both will ultimately produce the same amount of heat. The size of the logs you add determines the intensity and duration of the fire.

USE

■ PROTECTIVE GLOVES

The use of the Focus protective gloves provided with our models is required when handling the damper, the spark guard, and other components.

■ OPERATION AND USE OF THE DAMPER

The use of the cold hand tool or protective gloves is mandatory when handling the damper to avoid burns.

The Meijifocus damper has 4 positions :

- When the handle is vertical, the shutter is 0%.
- When the handle is horizontal, the shutter is 75%.
- The two intermediate positions allow adjustments between 0% and 75%.

To change the position of the damper, first pull the handle toward you, then turn it, and push it back to lock it into one of the predefined positions.



WARNING :

NEVER ADJUST THE DAMPER TO AN INTERMEDIATE POSITION. THE DAMPER POSITION MUST BE ADAPTED TO THE INTENSITY OF THE FIRE. DURING IGNITION, IT SHOULD BE FULLY OPEN. IT SHOULD THEN BE ADJUSTED TO REDUCE THE SMOKE FLOW, ENSURING OPTIMAL THERMAL EFFICIENCY.

IF THE FIREPLACE BACK DRAFTS, THIS INDICATES THAT THE DAMPER IS OBSTRUCTING THE CHIMNEY TOO MUCH: REOPEN THE DAMPER AT THE FIRST SIGNS OF BACK DRAFTING.

MAINTENANCE

■ ASH REMOVAL



WARNING :

ENSURE THE FIRE IS EXTINGUISHED AND THE FIREPLACE SURFACES ARE COMPLETELY COOL BEFORE PROCEEDING WITH ASH REMOVAL.

To remove the ashes, we recommend using a shovel and a brush after removing the fire bowl. Place the ashes in an appropriate container (not supplied). After cleaning, make sure to properly reposition the andirons.

■ CREOSOTE FORMATION

When wood burns slowly, it produces tar and other organic vapors that combine with expelled moisture to form creosote. These creosote vapors condense in the relatively cool chimney of a slow-burning fire. As a result, creosote residues accumulate on the chimney walls. If ignited, this creosote produces an extremely hot fire.

Therefore, the chimney and chimney connector must be **inspected at least once every two months during the heating season** to determine if creosote has accumulated. If a significant layer of creosote (3 mm or more) has built up, it must be removed to reduce the risk of a chimney fire.

■ CHIMNEY SWEEPING

The Focus steel flue, stainless steel chimney, and single-wall connector must always be cleaned using a nylon brush. Never use a metal brush! Damage resulting from non-compliance with this instruction is not covered by the Focus warranty.



WARNING :

CHEMICAL CHIMNEY SWEEPING IS PROHIBITED. ONLY MECHANICAL SWEEPING IS ALLOWED.

■ FIRE GLASSES CLEANING

The exterior glass surfaces can be cleaned with a soft, dry cloth using a standard glass cleaner. Do not use abrasive products.

The interior glass surfaces must be cleaned regularly to prevent soot build-up. Use a commercially available stove glass cleaner.



WARNING :

DO NOT CLEAN THE GLASS WHEN HOT.

MAINTENANCE

■ SURFACE CLEANING

The exterior surfaces can be cleaned with a soft, dry cloth or a damp sponge (ensuring the fireplace is cool).



WARNING :

DO NOT SCRAPE THE PAINT.

■ SPARE PARTS

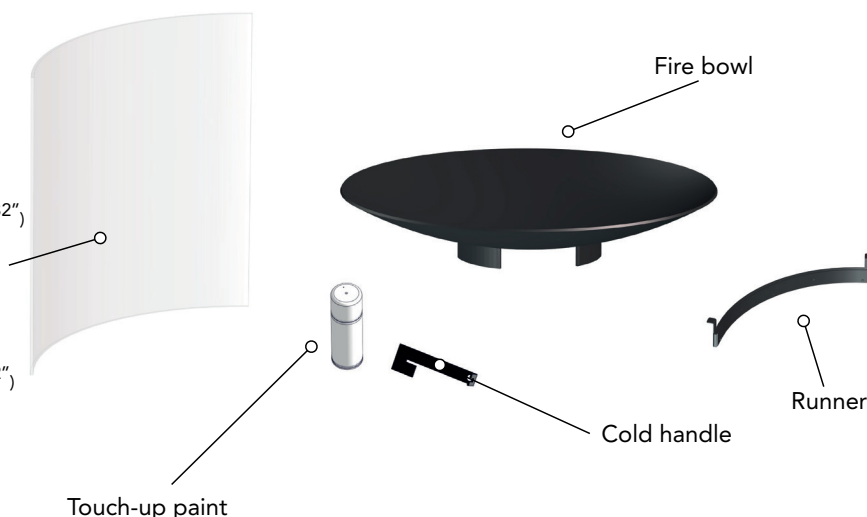
Note : In the event of a part replacement, use only parts recommended by Focus. Failure to comply with this note will automatically void the warranty.

3 stationary glass :

Thickness : 4 mm (5/32")
Height : 500 mm (19 11/16")
Radius : 408 mm (16 2/32")
Developed length : 550 mm (21 21/32")

2 sliding glass :

Thickness : 4 mm (5/32")
Height : 500 mm (19 11/16")
Radius : 420 mm (16 17/32")
Developed length : 564 mm (22 7/32")



To order these parts, contact :



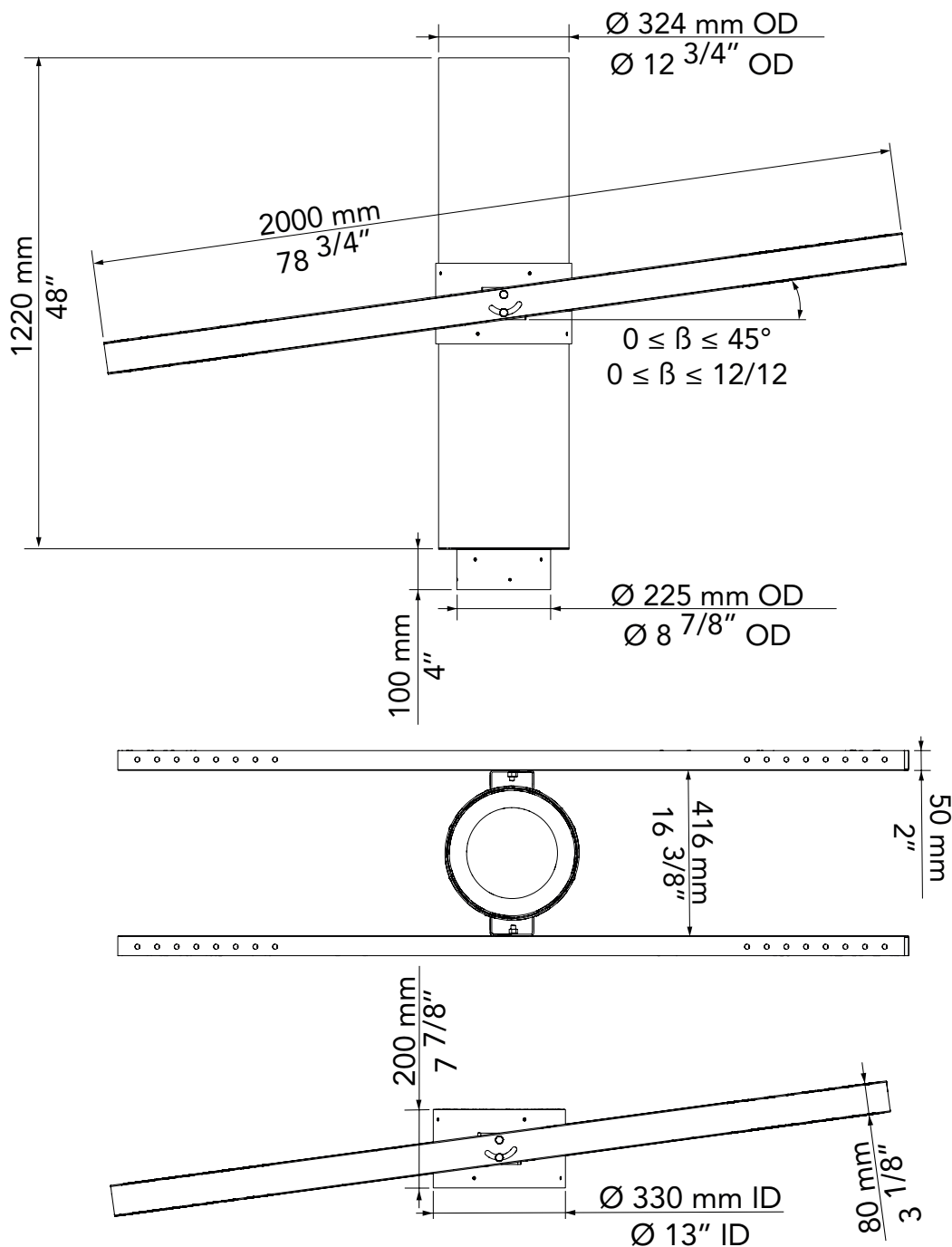
30 Log Bridge Road
Building 300 – Suite 303
Middleton, MA 01949
T: 781-324-8383
www.europeanhome.com

WARRANTY

All our Focus models are guaranteed against any defects in design, construction, and manufacturing, and are guaranteed to function properly for 5 years from the date of purchase. The warranty for our products is only applicable when our fireplaces have been installed in compliance with all local building regulations and with strict attention to the technical details described in our design plans, installation manuals, maintenance manuals, and user manuals. Our warranties exclude accidental damage, such as those occurring during transport without written notification upon receipt (reservations), damage caused during installation, and damage resulting from improper use. Exclusion of the warranty applies to the coating for appliances located less than 10 km from a saline environment.

APPENDIX

■ ADJUSTABLE SUSPENSION PLATE

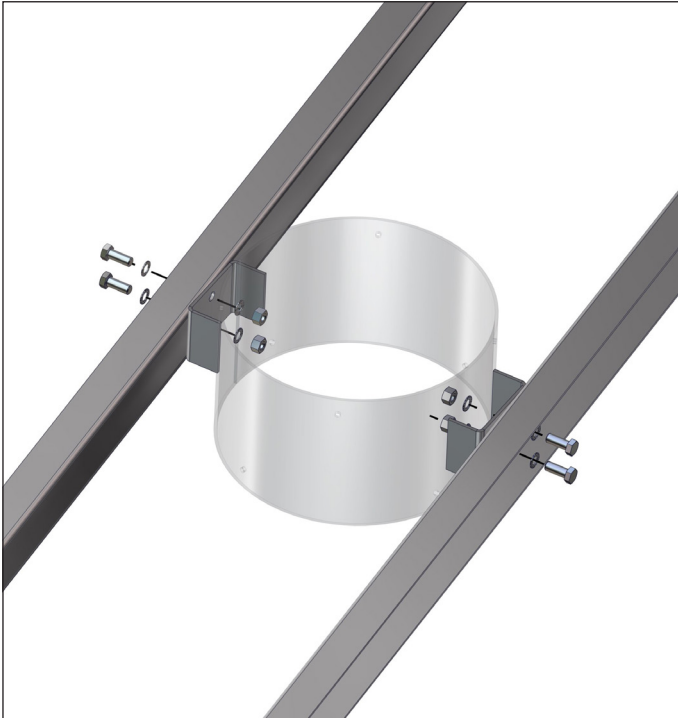


The components of the suspension plate are :

- 2 mounting bars (U-profile).
- 1 support collar (4 bolts, 4 nuts, 8 washers).
- 1 sleeve.
- 8 pointed screws (M8X10).

Note : Maintain a 50 mm (2") air gap around the connection to the flue pipe. The mounting bars can be adjusted on-site if needed. Ensure they are securely fixed to the structure to support the weight of the fireplace and the chimney.

APPENDIX



1. Assemble the Support Collar:

- Position the support collar between the mounting bars.
- Secure the bolts firmly using the provided nuts and washers.

2. Mount the Assembly:

- Attach the assembled unit to the ceiling or roof at the designated location.
- Ensure the attachment is firm and secure.

3. Insert the Sleeve:

- From below, place the sleeve into the support collar.
- Ensure the sleeve is inserted and positioned securely.

4. Adjust the Sleeve Length:

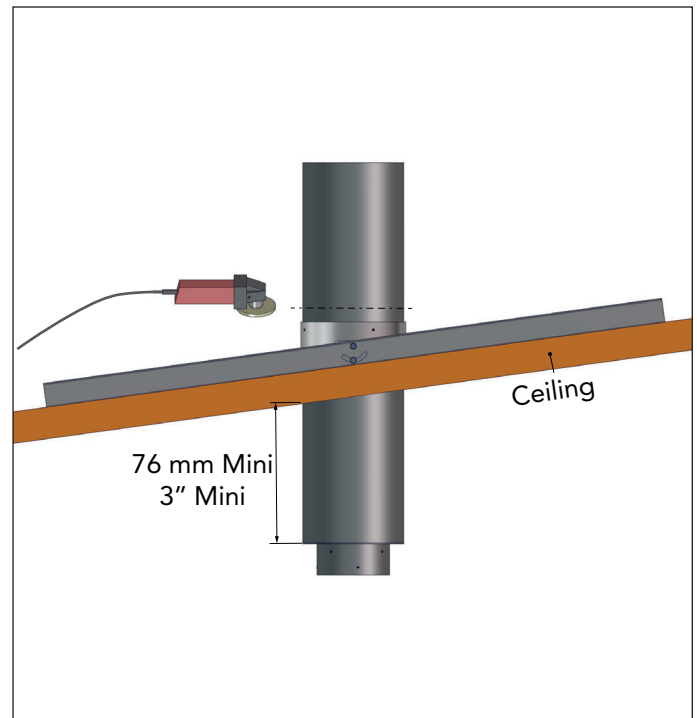
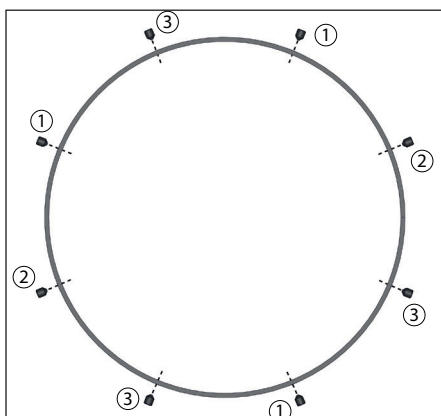
- Adjust the length of the sleeve to the desired size.
- Ensure that the widest part of the sleeve is positioned at a minimum of 76 mm (3") below the ceiling finish.

5. Mark and Prepare for Cutting:

- If the sleeve needs to be cut, mark it above the support collar using a pencil.
- Remove the sleeve from the support collar and apply tape around the pencil marks to use as a cutting guide.

6. Cut the Sleeve with an Angle Grinder:

- Use an angle grinder to cut the sleeve along the taped guide.



7. Reinstall the Sleeve in the Support Collar:

- Place the sleeve back into the support collar.
- Using a level, confirm proper alignment and securely tighten the set screws according to the diagram.



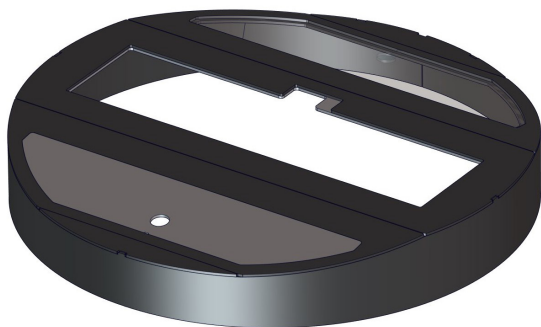
WARNING :

THE SCREWS ARE NOT FLUSH.

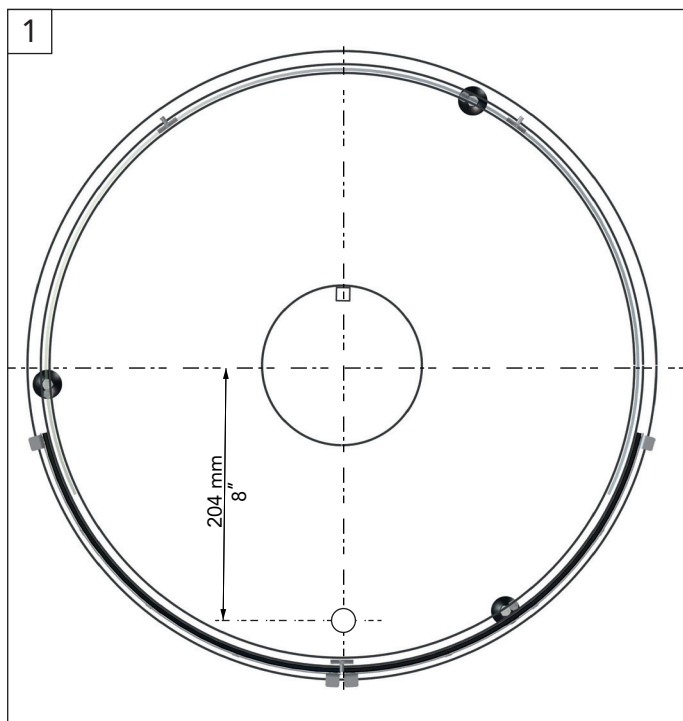
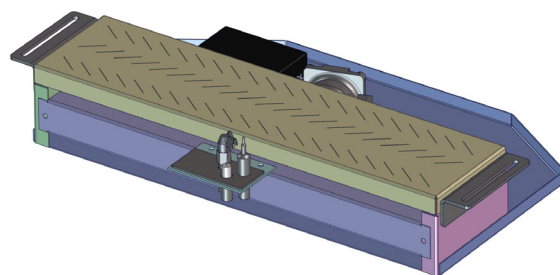
APPENDIX

■ GAS ADAPTATION

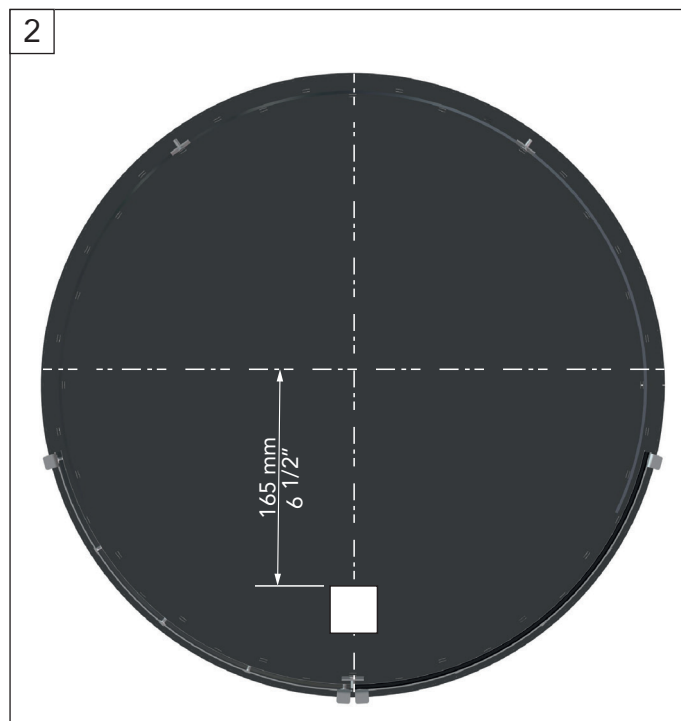
BURNER COVER



BURNER



Position of the gas supply line.



Drill a hole in the base.

Then follow the steps on page 13 of the manual: "European Home Gas Stones Natural Vent Manual."



CREATE BEYOND CONVENTION

Focus – Atelier Dominique Imbert
3 impasse Claque Patin, Viols le fort, France
www.focus-creation.com
info@focus-creation.com